


Microwave heating equipment

How much material do you want to heat per hour?

Our Leader Machinery can provide you with microwave heating equipment of various types. If you are interested in our microwave heating equipment or other microwave drying equipment, dehydration equipment, etc, please contact us for more details and prices of microwave equipment.

			
12kw Microwave heating equipment	30kw Microwave heating equipment	50kw Microwave heating equipment	Higher power microwave heating equipment can be customized

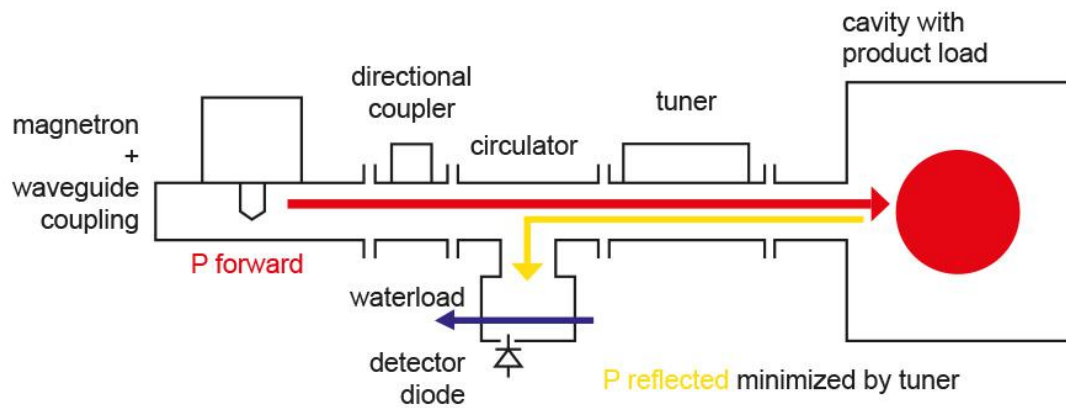
Unique functions and advantages of Leader microwave heating equipment:

1. The work process does not emit waste gas, waste water to realize its value and protect our environment.
2. We have different types of microwave equipment, which can meet your different needs.
3. The operating system of microwave heating equipment is simple, uniform and fast.
4. Microwave heating equipment is automatic equipment, greatly saving labor costs.
5. The delivery date is short. We have experienced workers who can manufacture microwave heating equipment or other microwave dehydration equipment in a short time.

Product specification:

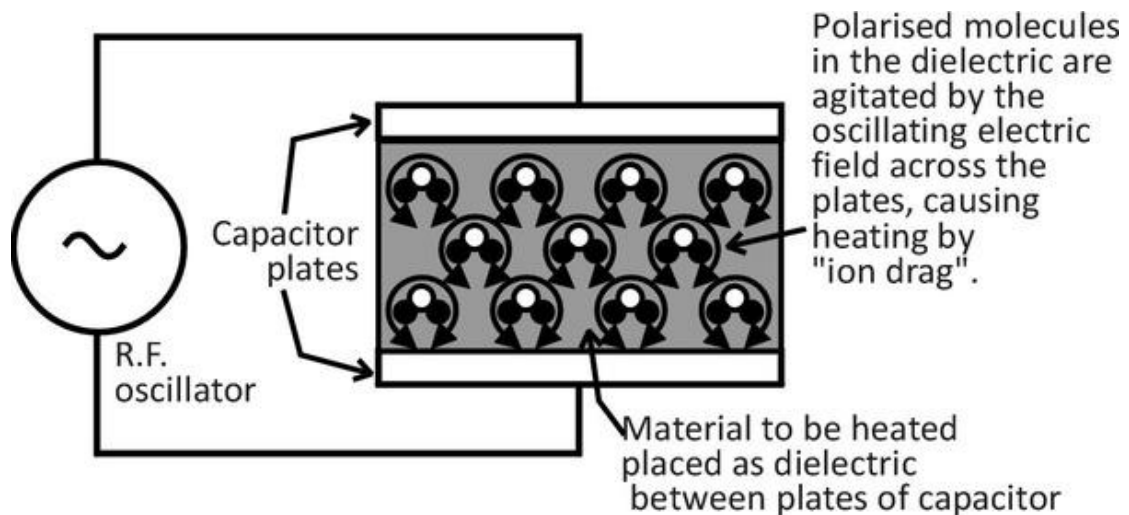
Model	DL-12 KW	DL-30KW	DL-50KW	DL-80KW
Microwave frequency	2450/915MHz	2450/915MHz	2450/915MHz	2450/915MHz
Output power	12 kilowatt	30 kilowatt	50 kilowatt	80 kilowatt
Transmission speed	0-5m /minute (adjustable)	0-5m /minute (adjustable)	0-5m /minute (adjustable)	0-5m /minute (adjustable)
Leakage value	≤3mw/cubic metre	≤3mw/cubic metre	≤3mw/cubic metre	≤3mw/cubic metre
Size	7000x840 x1800mm	10500x840 x1800mm	12500x1200 x1800mm	15000x1400 x1800mm
Heating efficiency	120-150kg/hour	300-400kg/hour	500-600kg/hour	800-1000kg/hour

Schematic Design of an industrial Microwave Plant according to GMP microwave:



The magnetron is installed on a waveguide launcher. The electromagnetic energy is guided within the waveguide structure and coupled into the applicator (cavity). The amount of reflected electromagnetic energy depends on the dielectric properties of the heated product and the dimensions of the cavity. In order to achieve the best possible efficiency, the amount of reflected electromagnetic energy can be minimised by using a tuner.

Principle of radio frequency heating:



Dielectric properties of various materials at 2.45 GHz. Apart from the case of ice, the values are valid for room temperature.:

Material	ϵ'	ϵ''	Remarks
Water	78.1	10.4	
Ice	3	0.003	$\vartheta = -2^\circ\text{C}$
1 molar NaCl-solution	74.8	21.4	
2 molar NaCl-solution	65.6	69.1	
Ethanol	7.5	7.1	
10% Ethanol-solution	71.5	13.8	(weight %)
10% Sucrose-solution	74.5	13.1	(weight %)
Vegetable oil	3.1	0.4	
Beef tissue	50	15	(uncooked)
Cooked ham	45	25	
Mashed potatoes	65	21	
Carrot tissue	71	18	(water content 89.7%)
Apple tissue	64	13	(water content 84.0%)

Leader Machinery is a large enterprise specializing in the production of microwave equipment. With the efforts of professional engineers and skilled staff, we have been researching and developing our microwave equipment for sale. Each innovation can make the Leader machine more efficient. We would like to design and upgrade microwave machinery to meet your special requirements. We look forward to working with you. We welcome your consultants.